

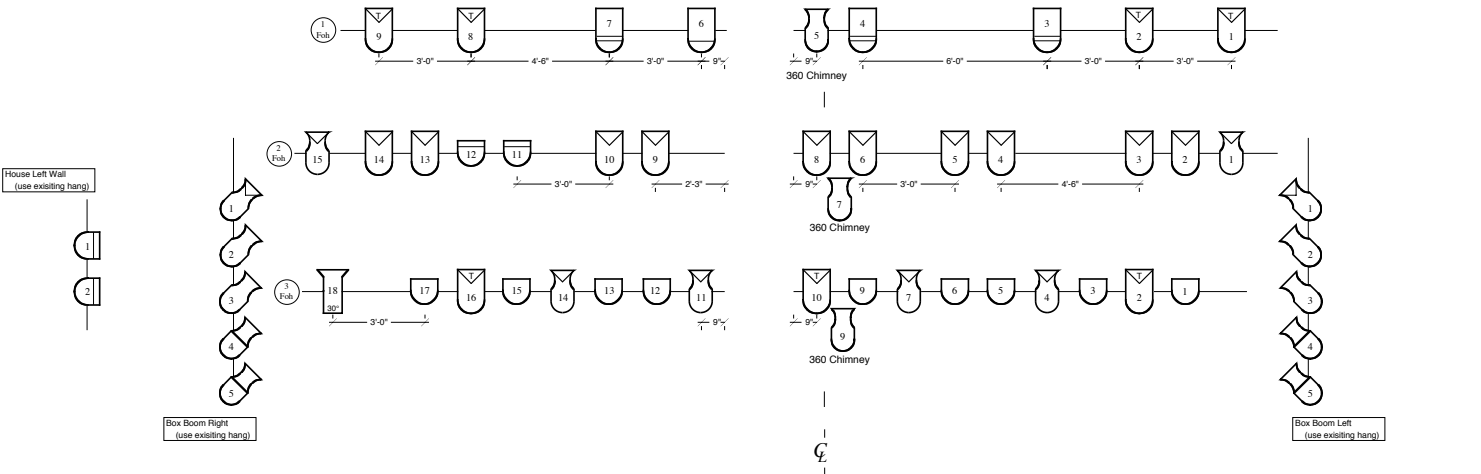
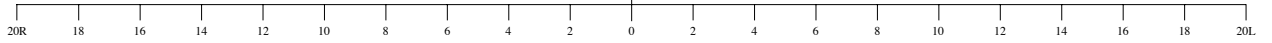
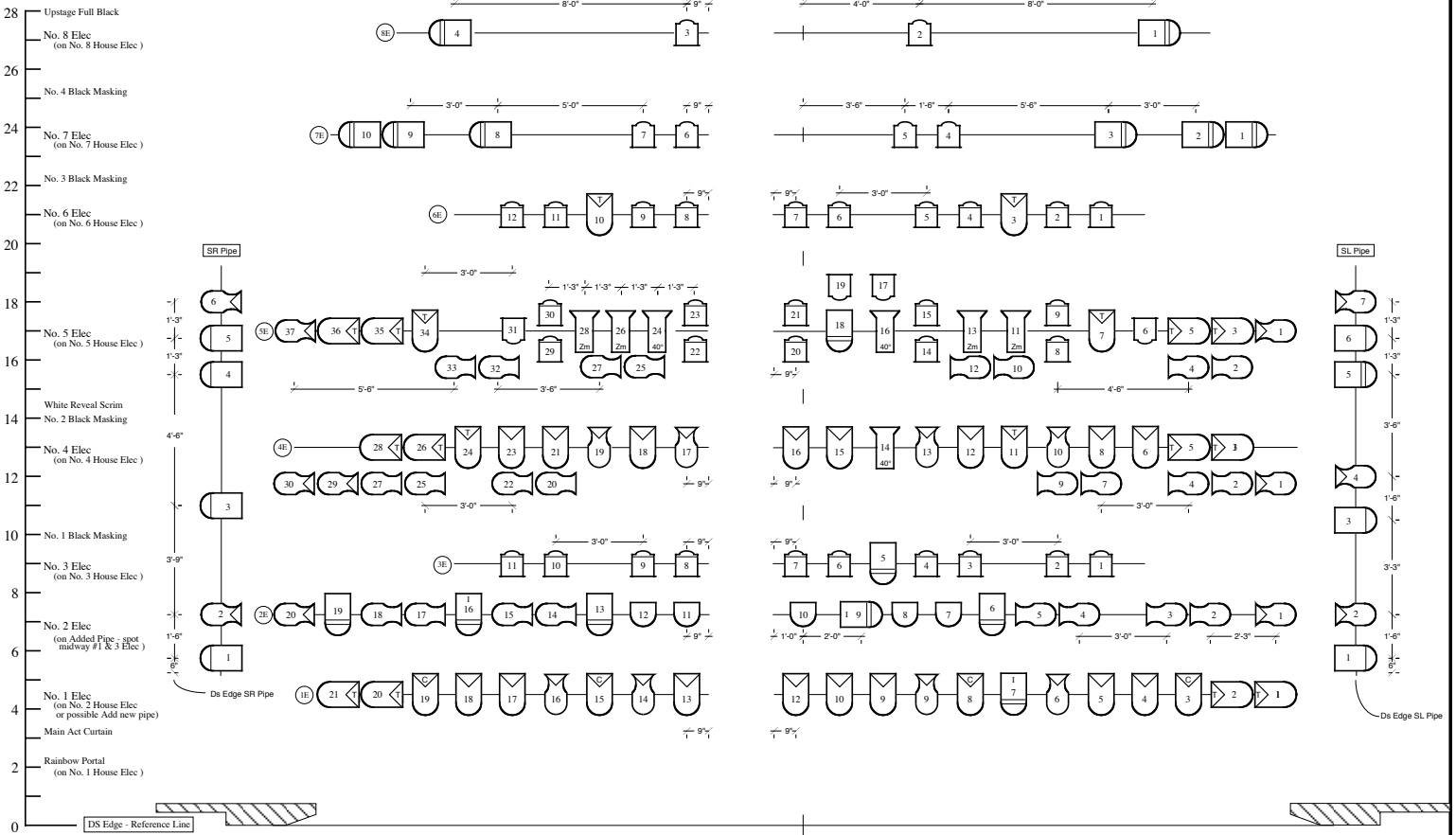
Notes

Provide worklight as required.
 Stiffen all Electrics as needed.
 Please discuss pipe additions prior to hang.
 Use NCC standard Box Boom Wash units as presently hung.
 Front of House electric pipes not shown in exact location.
 All Altman lekos are 360Q's except 6x9 units CL on 1 - 2 - 3 Foh Pipes.
 Refer to Section Plot for clearer detail on Electric Out-Back Hanging.
 Stoney work: (207) 772-7606 ext# 23
 home: (207) 799-8494
 e-mail: stoney@infotech-maine.com

Rainbow Portal Practicals

RopeLight (1 to 3 circuits)

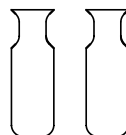
Stars (14 circuits)



Key

	ETC Source 4 26° 575w leko		Altman 4.5 x 6.5 600w hx 360Q Leko
	ETC Source 4 36° 575w leko		Altman 6 x 9 600w hx 360Q Leko
	ETC Source 4 36° 575w temp leko		Altman 6 x 12 600w hx 360Q Leko
	ETC Source 4 36° 575w iris leko		Colortran Mini 40° 500w leko
	ETC Source 4 50° 575w leko		Colortran Mini 30° 500w leko
	ETC Source 4 50° 575w temp leko		Colortran Mini-Zoom 500w leko
	Par64 1000w Wide FI		Altman 6° 1KAF 750w Fresnel
	Par64 1000w Medium FI		Altman 6° 65Q 500w Fresnel

All Units Spaced on 1'-6" Centers Unless Noted Otherwise



Rear House

2 Lycian Midget 2kw 1270 Followspots (position as close to CL as possible)

NCC - Theatre & Dance 2002	
"Dames at Sea"	
The "Single Story" Theatre	
1/2" Light Plot FOH and Electrics	
LIGHT DESIGN	Stoney Cook
EXECUTION	Peter Fox
SCALE 1/2" = 1' - 0"	REV "A"
DATE April 11th, 2002	PLATE 1 of 3

L.D. 316

