

LineSet Assignment

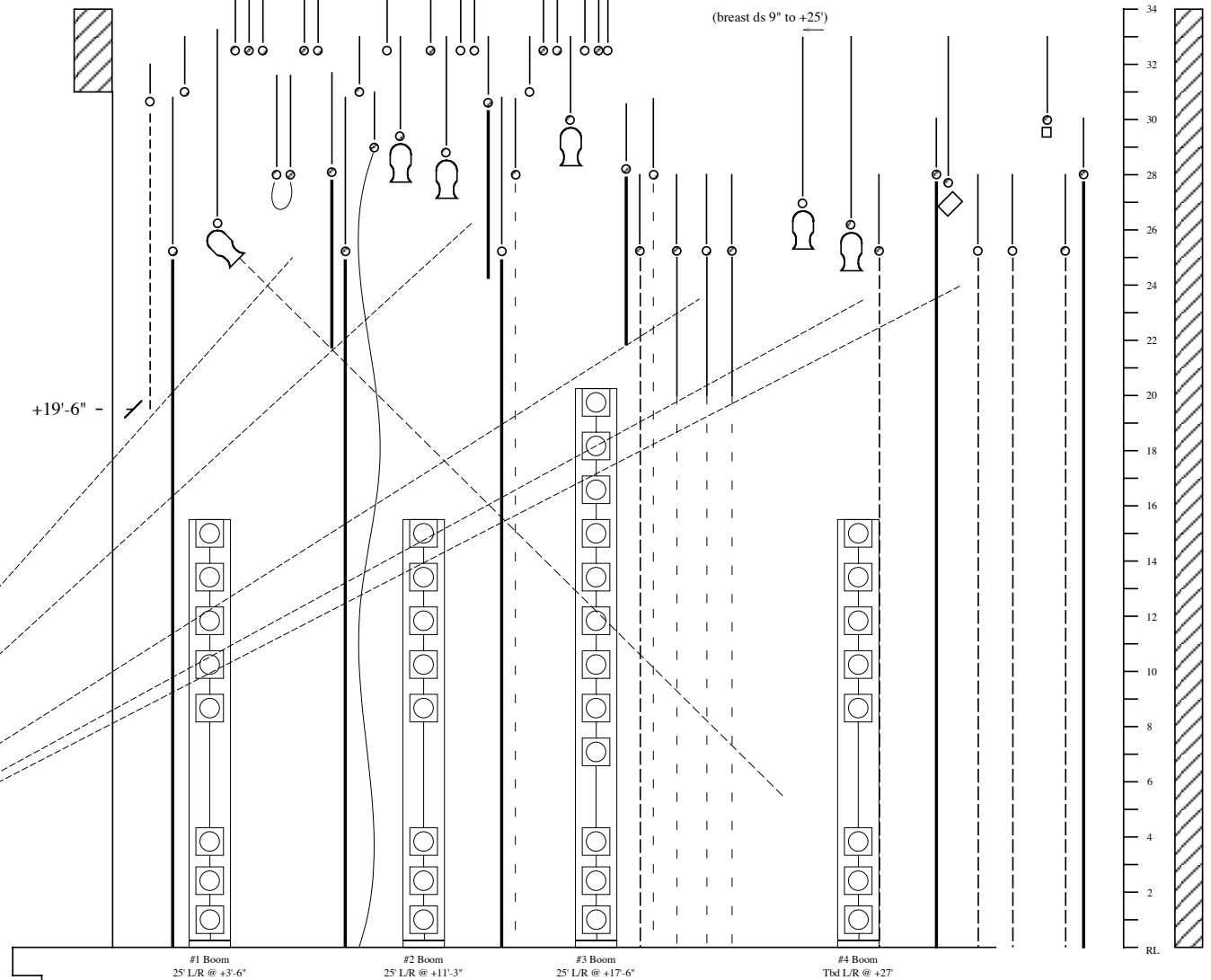
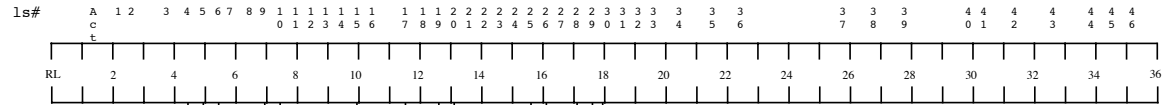
- Arch 0'-0"
- Main 0'-0" Reference Line
- Is#1 2'-2" Main Act Curtain Bottom curtain @ 20'-9.5" Out Trim
- #2 2'-7" Show Portal Black Legs
- #3 3'-10" X-Over pipe In 1 @ +31'-0"
- #4 4'-5" No. 1 Elec @ +26'-4"
- #5 4'-11"
- #6 5'-5"
- #7 5'-11" Snowbag #1 Pull line
- #8 6'-5" Dead line @ 28'-0"
- #9 6'-11"
- #10 7'-5"
- #11 7'-11" No. 1 Black Boder @ +21'-8"
- #12 8'-5" Black Legs +19'-3" L/R
- #13 8'-11" X-Over pipe In 2 @ +31'-0"
- #14 9'-5" Streamers
- #15 9'-11"
- #16 10'-5" No. 2 Elec @ +29'-5"
- #17 11'-6"
- #18 12'-1" No. 3 Elec @ +28'-10"
- #19 12'-7"
- #20 13'-1"
- #21 13'-7" No. 2 Black Boder @ +24'-3"
- #22 14'-1" Black Legs +19'-3" L/R
- #23 14'-7" Dross Scrim
- #24 15'-1" X-Over pipe In 3 @ +31'-0"
- #25 15'-7"
- #26 16'-1" No. 4 Elec @ +30'-0"
- #27 16'-7"
- #28 17'-1"
- #29 17'-7"
- #30 18'-1" +19'-6" -
- #31 18'-7" No. 3 Black Boder (High) @ +22'-5" (Low Top I) @ +20'-11"
- #32 19'-1" Black Scrim
- #33 19'-7" Drop Star
- #34 20'-5" Portal Snow
- #35 21'-6" Portal Sweets
- #36 22'-5" Portal Parlor
- #37 25'-9" No. 5 Elec @ +27'-0" (breast ds 0'-9" to +25'-0")
- #38 26'-9" No. 6 Elec @ +26'-3"
- #39 27'-9" Drop Battle
- #40 29'-10" No. 3 Black Legs +19'-3" L/R
- #41 30'-4" No. 7 Elec @ +27'-9"
- #42 31'-4" Drop Snow
- #43 32'-7" Drop Sweets
- #44 33'-10" Growing Tree Rig
- #45 34'-6" Drop Parlor
- #46 35'-2" Draft drop

Boom Placement

- #1 Boom 25' L/R @ +3'-6"
 - #2 Boom 25' L/R @ +11'-3"
 - #3 Boom 25' L/R @ +17'-6"
 - #4 Boom Tbd' L/R @ +27'
- (Note: Room to X behind on offstage side)

Wing Placement

- In1 - 6'-3"
- In2 - 5'-8"
- In3 - 6'-4" Snow
- 7'-5" Sweets
- 8'-4" Parlor
- In4 - 9'-5" Snow
- 8'-4" Sweets
- 7'-5" Parlor



Jose Mateo Theatre Boston
Nutcracker 2006
 Brandeis "Mainstage Theatre"

1/2" Section
 Scale: 1/2" = 1'-0"
 Date: 11/24/2006
 Rev: No Growing Tree Strike

Stoney Cook

